



**DEPARTMENT OF THE ARMY**  
LITTLE ROCK DISTRICT, CORPS OF ENGINEERS  
POST OFFICE BOX 867  
LITTLE ROCK, ARKANSAS 72203-0867  
www.swl.usace.army.mil

CESWL-RD

1 December 2025

MEMORANDUM FOR RECORD

SUBJECT: US Army Corps of Engineers (Corps) Pre-2015 Regulatory Regime  
Approved Jurisdictional Determination in Light of *Sackett v. EPA*, 143 S. Ct. 1322  
(2023),<sup>1</sup> **SWL 2024-00411** []<sup>2</sup>

BACKGROUND. An Approved Jurisdictional Determination (AJD) is a Corps document stating the presence or absence of waters of the United States on a parcel or a written statement and map identifying the limits of waters of the United States on a parcel. AJDs are clearly designated appealable actions and will include a basis of JD with the document.<sup>3</sup> AJDs are case-specific and are typically made in response to a request. AJDs are valid for a period of five years unless new information warrants revision of the determination before the expiration date or a District Engineer has identified, after public notice and comment, that specific geographic areas with rapidly changing environmental conditions merit re-verification on a more frequent basis.<sup>4</sup> For the purposes of this AJD, we have relied on section 10 of the Rivers and Harbors Act of 1899 (RHA),<sup>5</sup> the Clean Water Act (CWA) implementing regulations published by the Department of the Army in 1986 and amended in 1993 (references 2.a. and 2.b. respectively), the 2008 *Rapanos-Carabell* guidance (reference 2.c.), and other applicable guidance, relevant case law and longstanding practice, (collectively the pre-2015 regulatory regime), and the *Sackett* decision (reference 2.d.) in evaluating jurisdiction.

This Memorandum for Record (MFR) constitutes the basis of jurisdiction for a Corps AJD as defined in 33 CFR §331.2. The features addressed in this AJD were evaluated consistent with the definition of “waters of the United States” found in the pre-2015 regulatory regime and consistent with the Supreme Court's decision in *Sackett*. This AJD did not rely on the 2023 “Revised Definition of ‘Waters of the United States,’” as

---

<sup>1</sup> While the Supreme Court's decision in *Sackett* had no effect on some categories of waters covered under the CWA, and no effect on any waters covered under RHA, all categories are included in this Memorandum for Record for efficiency.

<sup>2</sup> When documenting aquatic resources within the review area that are jurisdictional under the Clean Water Act (CWA), use an additional MFR and group the aquatic resources on each MFR based on the TNW, interstate water, or territorial seas that they are connected to. Be sure to provide an identifier to indicate when there are multiple MFRs associated with a single AJD request (i.e., number them 1, 2, 3, etc.).

<sup>3</sup> 33 CFR 331.2.

<sup>4</sup> Regulatory Guidance Letter 05-02.

<sup>5</sup> USACE has authority under both Section 9 and Section 10 of the Rivers and Harbors Act of 1899 but for convenience, in this MFR, jurisdiction under RHA will be referred to as Section 10.

amended on 8 September 2023 (Amended 2023 Rule) because, as of the date of this decision, the Amended 2023 Rule is not applicable in this state due to litigation.

## 1. SUMMARY OF CONCLUSIONS.

- a. Provide a list of each individual feature within the review area and the jurisdictional status of each one (i.e., identify whether each feature is/is not a water of the United States and/or a navigable water of the United States).
  - i. Wetland A (~4.1 acres, abutting an RPW), Jurisdictional, Section 404
  - ii. Wetland B (~26 acres, abutting an RPW), Jurisdictional, Section 404
  - iii. Stream A (~2,040 linear feet long, RPW), Jurisdictional, Section 404

## 2. REFERENCES.

- a. Final Rule for Regulatory Programs of the Corps of Engineers, 51 FR 41206 (November 13, 1986).
- b. Clean Water Act Regulatory Programs, 58 FR 45008 (August 25, 1993).
- c. U.S. EPA & U.S. Army Corps of Engineers, Clean Water Act Jurisdiction Following the U.S. Supreme Court's Decision in *Rapanos v. United States & Carabell v. United States* (December 2, 2008)
- d. *Sackett v. EPA*, 598 U.S. \_\_, 143 S. Ct. 1322 (2023)
- e. 1987 Corps of Engineers Wetlands Atlantic and Gulf Coastal Plain Region Supplement

3. REVIEW AREA. The site is located in the southern 1/2 of Section 20 T. 1 N., R. 11 W., southeast of Little Rock in Pulaski County, Arkansas. The review area is an approximately 76.35-acre site labeled as "Approximate Property Boundary" on the attached maps. Approximate center coordinates for the review area are Lat. 34.696817, Long. -92.217344

4. NEAREST TRADITIONAL NAVIGABLE WATER (TNW), INTERSTATE WATER, OR THE TERRITORIAL SEAS TO WHICH THE AQUATIC RESOURCE IS CONNECTED. The Arkansas River (TNW) which is also a Section 10 Waterway.<sup>6</sup>

---

<sup>6</sup> This MFR should not be used to complete a new stand-alone TNW determination. A stand-alone TNW determination for a water that is not subject to Section 9 or 10 of the Rivers and Harbors Act of 1899 (RHA) is completed independently of a request for an AJD. A stand-alone TNW determination is

5. FLOWPATH FROM THE SUBJECT AQUATIC RESOURCES TO A TNW, INTERSTATE WATER, OR THE TERRITORIAL SEAS. Both Wetland A and B abut Stream A (RPW) which is an unnamed tributary to Fourche Creek (RPW), to the Arkansas River (TNW).
6. SECTION 10 JURISDICTIONAL WATERS<sup>7</sup>: Describe aquatic resources or other features within the review area determined to be jurisdictional in accordance with Section 10 of the Rivers and Harbors Act of 1899. Include the size of each aquatic resource or other feature within the review area and how it was determined to be jurisdictional in accordance with Section 10.<sup>8</sup> N/A
7. SECTION 404 JURISDICTIONAL WATERS: Describe the aquatic resources within the review area that were found to meet the definition of waters of the United States in accordance with the pre-2015 regulatory regime and consistent with the Supreme Court's decision in *Sackett*. List each aquatic resource separately, by name, consistent with the naming convention used in section 1, above. Include a rationale for each aquatic resource, supporting that the aquatic resource meets the relevant category of "waters of the United States" in the pre-2015 regulatory regime. The rationale should also include a written description of, or reference to a map in the administrative record that shows, the lateral limits of jurisdiction for each aquatic resource, including how that limit was determined, and incorporate relevant references used. Include the size of each aquatic resource in acres or linear feet and attach and reference related figures as needed.
  - a. TNWs (a)(1): N/A
  - b. Interstate Waters (a)(2): N/A
  - c. Other Waters (a)(3): N/A
  - d. Impoundments (a)(4): N/A
  - e. Tributaries (a)(5):

---

conducted for a specific segment of river or stream or other type of waterbody, such as a lake, where upstream or downstream limits or lake borders are established.

<sup>7</sup> 33 CFR 329.9(a) A waterbody which was navigable in its natural or improved state, or which was susceptible of reasonable improvement (as discussed in § 329.8(b) of this part) retains its character as "navigable in law" even though it is not presently used for commerce or is presently incapable of such use because of changed conditions or the presence of obstructions.

<sup>8</sup> This MFR is not to be used to make a report of findings to support a determination that the water is a navigable water of the United States. The district must follow the procedures outlined in 33 CFR part 329.14 to make a determination that water is a navigable water of the United States subject to Section 10 of the RHA.

- i. Stream A ~2,040 linear feet long 1st order RPW. The delineation report notes this feature as having good flow and a well-defined bed and bank. This feature has been mapped on USGS topographic maps dating from 1935. Historic aerial imagery also supports evidence of relatively permanent flow.
- f. The territorial seas (a)(6): N/A
- g. Adjacent wetlands (a)(7):
  - i. Wetland A is an approximately 4.1-acre palustrine forested wetland located in the south and central portions of the site. Wetland A abuts Stream A an unnamed RPW along its eastern boundary. As such Wetland A does have a continuous surface connection to a RPW and provides relatively permanent flow to a downstream TNW.
  - ii. Wetland B is an approximately 26-acre palustrine forested wetland located in the eastern portion of the site. Wetland B abuts Stream A an unnamed RPW along its western boundary. As such Wetland A does have a continuous surface connection to a RPW and provides relatively permanent flow to a downstream TNW.

## 8. NON-JURISDICTIONAL AQUATIC RESOURCES AND FEATURES

- a. Describe aquatic resources and other features within the review area identified as “generally non-jurisdictional” in the preamble to the 1986 regulations (referred to as “preamble waters”).<sup>9</sup> Include size of the aquatic resource or feature within the review area and describe how it was determined to be non-jurisdictional under the CWA as a preamble water. N/A
- b. Describe aquatic resources and features within the review area identified as “generally not jurisdictional” in the *Rapanos* guidance. Include size of the aquatic resource or feature within the review area and describe how it was determined to be non-jurisdictional under the CWA based on the criteria listed in the guidance. N/A
- c. Describe aquatic resources and features identified within the review area as waste treatment systems, including treatment ponds or lagoons designed to meet the requirements of CWA. Include the size of the waste treatment system within the review area and describe how it was determined to be a waste treatment system. N/A

---

<sup>9</sup> 51 FR 41217, November 13, 1986.

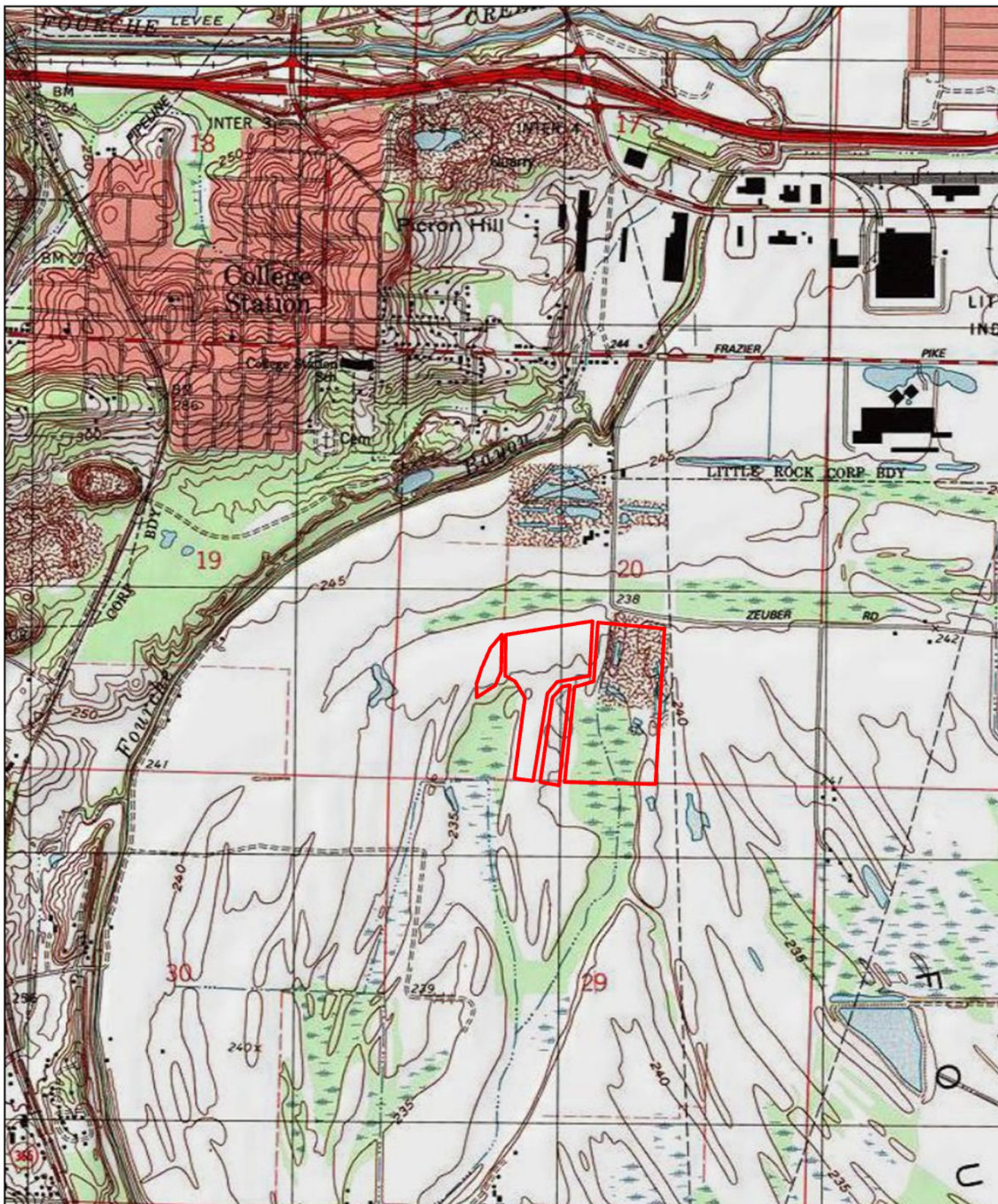
- d. Describe aquatic resources and features within the review area determined to be prior converted cropland in accordance with the 1993 regulations (reference 2.b.). Include the size of the aquatic resource or feature within the review area and describe how it was determined to be prior converted cropland. N/A
  - e. Describe aquatic resources (i.e. lakes and ponds) within the review area, which do not have a nexus to interstate or foreign commerce, and prior to the January 2001 Supreme Court decision in “*SWANCC*,” would have been jurisdictional based solely on the “Migratory Bird Rule.” Include the size of the aquatic resource or feature, and how it was determined to be an “isolated water” in accordance with *SWANCC*. N/A
  - f. Describe aquatic resources and features within the review area that were determined to be non-jurisdictional because they do not meet one or more categories of waters of the United States under the pre-2015 regulatory regime consistent with the Supreme Court’s decision in *Sackett* (e.g., tributaries that are non-relatively permanent waters; non-tidal wetlands that do not have a continuous surface connection to a jurisdictional water). N/A
9. DATA SOURCES. List sources of data/information used in making determination. Include titles and dates of sources used and ensure that information referenced is available in the administrative record.
- a. Office review by Corps personnel was conducted on June 04, 2025
  - b. Pollution Management, Inc., A Terracon Company (PMI) Delineation Report dated, February 27, 2025
  - c. USGS Stream Stats, June 04, 2025
  - d. USGS topoView Sweet Home, AR 1:24K, June 04, 2025
  - e. Google Earth Pro. (1994-2021 Imagery), June 04, 2025
  - f. USDA Natural Resources Conservation Service Web Soil Survey Pulaski County, June 04, 2025
  - g. NHD data accessed on National Regulatory Viewer, June 04, 2025
  - h. Historic Aerials via <https://www.historicaerials.com/viewer>, June 04, 2025
10. OTHER SUPPORTING INFORMATION. N/A

CESWL-RD

SUBJECT: Pre-2015 Regulatory Regime Approved Jurisdictional Determination in Light of *Sackett v. EPA*, 143 S. Ct. 1322 (2023), SWL 2024-00411

11. NOTE: The structure and format of this MFR were developed in coordination with the EPA and Department of the Army. The MFR's structure and format may be subject to future modification or may be rescinded as needed to implement additional guidance from the agencies; however, the approved jurisdictional determination described herein is a final agency action.



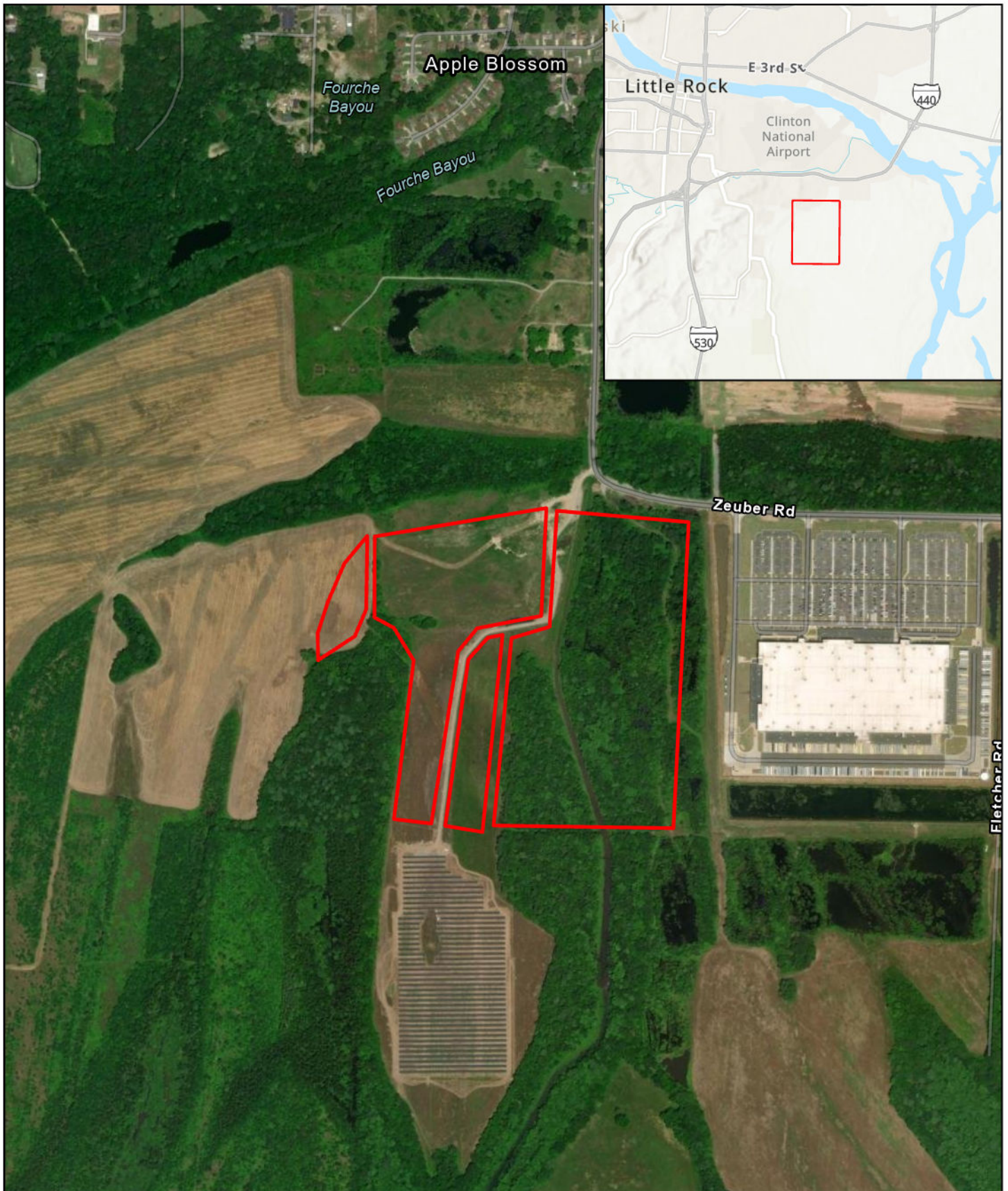


Scale: 1:24,000

0 0.25 0.5 1 Miles

**ACTION NO. SWL 2024-00411**  
**CLR Site - Scenic Hill Solar**  
**Approved Jurisdictional Determination**  
**Sec. 20, T. 1 N., R. 11 W.**  
**December 2025** **Page 1 of 3**





Scale: 1:10,000

0 2.5 5 10 Miles

**ACTION NO. SWL 2024-00411**  
**CLR Site - Scenic Hill Solar**  
**Approved Jurisdictional Determination**  
**Sec. 20, T. 1 N., R. 11 W.**  
**December 2025** **Page 2 of 3**





SHEET TITLE:  
AERIAL IMAGERY WITH APPROXIMATE AQUATIC FEATURES

PROJECT TITLE:  
SHS - CLR - USACE  
SCENIC HILL SOLAR  
LITTLE ROCK, ARKANSAS

REVIEWS:	
NO.	DATE
BY:	
DESCRIPTION:	

CIVIL ENGINEERING AND ENVIRONMENTAL SERVICES  
3612 SOUTH SHACKLEFORD RD  
LITTLE ROCK, ARKANSAS 72205  
PH: (501) 221-7122 FX: (501) 221-7775

BY: CWY  
DATE: FEB. 11, 2025

BY: CWY  
SCALE: 1" = 250'

ECTS\2024\1247392\WORKING FILES\DIAGRAMS-DRAWINGS-FIGURES\1247392.DWG

ACTION NO. SWL 2024-00411  
CLR Site - Scenic Hill Solar  
Approved Jurisdictional Determination  
Sec. 20, T. 1 N., R. 11 W.  
December 2025

Page 3 of 3